

## lyra mandarin 6-540



Hannes Wettstein, 2007

Sitz Formsperrholz, Rücken Joncgeflecht, Hinterfüsse und Rückenschwinge massiv gebogen, stapelbar, Reihenverbindung möglich  
B49, T53, H80, SH46

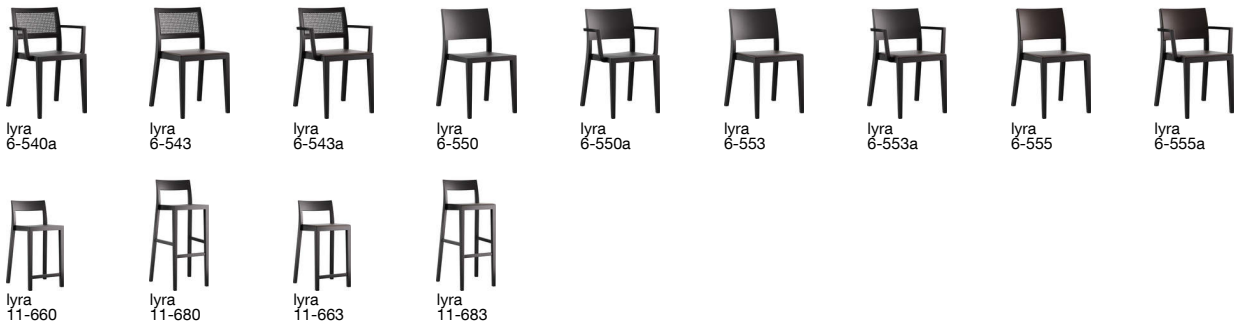
Hannes Wettstein, 2007

Assise en multiplis, dossier canné, montants de dossier et pieds arrière en bois massif cintré, empilable, système d'accouplement en option  
L49, P53, H80, HAss46

Hannes Wettstein, 2007

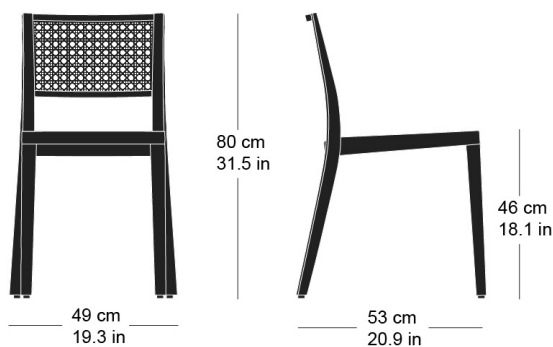
Moulded plywood seat, woven cane back, rear legs and rear cross-brace solid bentwood, stackable, optional row connector  
W49, D53, H82, SH46

### Varianten / variantes / variants



### Technische Angaben / specifications / specifications

#### Masse / mesure / measure



Gewicht / ponds / weight    4.2 kg    8.4 lb

Reihenverbindung /  
accouplement / mating system    ja / oui / yes

Stapelung / empilage / stacking    5 Stühle / chaises / chairs

## lyra mandarin 6-540

### Holzarten / types de bois / types of wood



Buche natur HG 520  
Natural beech HG 520  
Hêtre naturel HG 520



Buche anthrazit HG 200  
Anthracite beech HG 200  
Hêtre anthracite HG 200



Buche weiss HG 330  
White beech HG 330  
Hêtre blanc HG 330



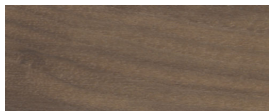
Eiche natur HG 530  
Natural oak HG 530  
Chêne naturel HG 530



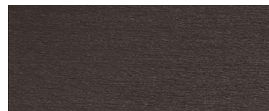
Buche Ebony HG 100  
Ebony beech HG 100  
Hêtre teinté ebony HG 100



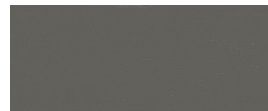
Buche hellgrau HG 340  
Light grey beech HG 340  
Hêtre clair gris HG 340



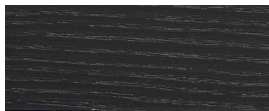
Schwarznuss natur HG 560  
Natural black walnut HG 560  
Noyer noir naturel HG 560



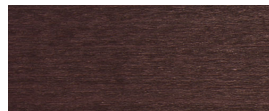
Buche Wenge HG 110  
Wenge beech HG 110  
Hêtre teinté wenge HG 110



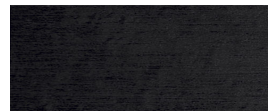
Buche grau HG 350  
Grey beech HG 350  
Hêtre gris HG 350



Esche / Eiche schwarz HG 580  
Black ash / oak HG 580  
Frêne / chêne noir HG 580



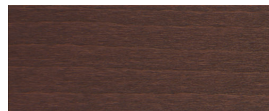
Buche Mahagoni HG 130  
Mahogany beech HG 130  
Hêtre teinté mahagoni HG 130



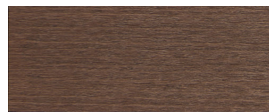
Buche schwarz HG 203  
Black beech HG 203  
Hêtre noir HG 203



Eiche gebeizt Räuchereiche HG 535  
Stained smoked oak HG 535  
Chêne teinté com chêne fumée HG 535



Buche Maron HG 120  
Maron beech HG 120  
Hêtre teinté maron HG 120



Buche Nuss HG 151  
Nut beech HG 151  
Hêtre teinté noyer HG 151



Buche geweisst HG 172  
Whitewashed beech HG 172  
Hêtre teinté blanc HG 172

### Belag / revêtement / surface