

**classic 1-380**

Factory design, 1918

Sitz Formsperrholz, Rücken, Hinterfüsse und Sitzzarge  
massiv gebogen

B44, T51, H83, SH46

Factory design, 1918

Assise en multiplis, dossier, pieds arrière et cadre du  
siège en bois massif cintré

L44, P51, H83, HAss46

Factory design, 1918

Moulded plywood seat, back, rear legs and seat frame  
solid bentwood

W44, D51, H83, SH46

## Varianten / variantes / variants

classic  
1-383classic  
11-380classic  
11-383

## Technische Angaben / specifications / specifications

## Masse / mesure / measure

44 cm  
17.3 in83 cm  
32.7 in51 cm  
20.1 in46 cm  
18.5 in

Gewicht / ponds / weight

4.3 kg 8.6 lb

## classic 1-380

### Holzarten / types de bois / types of wood



Natural beech HG 520  
Buche natur HG 520  
Hêtre naturel HG 520



Anthracite beech HG 200  
Buche anthrazit HG 200  
Hêtre anthracite HG 200



White beech HG 330  
Buche weiss HG 330  
Hêtre blanc HG 330



Natural oak HG 530  
Eiche natur HG 530  
Chêne naturel HG 530



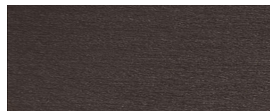
Ebony beech HG 100  
Buche Ebony HG 100  
Hêtre teinté ebony HG 100



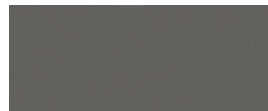
Light grey beech HG 340  
Buche hellgrau HG 340  
Hêtre clair gris HG 340



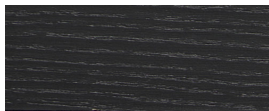
Natural cherry HG 550  
Kirschbaum natur HG 550  
Cerisier naturel HG 550



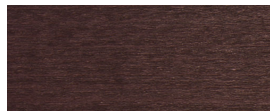
Wenge beech HG 110  
Buche Wenge HG 110  
Hêtre teinté wenge HG 110



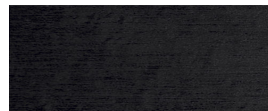
Grey beech HG 350  
Buche grau HG 350  
Hêtre gris HG 350



Black ash / oak HG 580  
Esche / Eiche schwarz HG 580  
Frêne / chêne noir HG 580



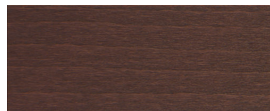
Mahogany beech HG 130  
Buche Mahagoni HG 130  
Hêtre teinté mahagoni HG 130



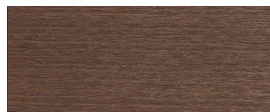
Black beech HG 203  
Buche schwarz HG 203  
Hêtre noir HG 203



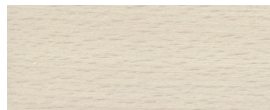
Stained smoked oak HG 535  
Eiche gebeizt Räuchereiche HG 535  
Chêne teinté com chêne fumée HG 535



Maron beech HG 120  
Buche Maron HG 120  
Hêtre teinté maron HG 120



Nut beech HG 151  
Buche Nuss HG 151  
Hêtre teinté noyer HG 151



Whitewashed beech HG 172  
Buche geweisst HG 172  
Hêtre teinté blanc HG 172

### Belag / revêtement / surface