

**miro 6-403a**

Hannes Wettstein, 1999

Sitz gepolstert, Hinterfüsse und Rücken massiv gebogen, stapelbar, Reihenverbindung möglich  
B54, T48, H80, SH47, ALH68

Hannes Wettstein, 1999

Assise rembourrée, dossier et pieds arrière en bois massif cintré, empilable, système d'accouplement en option  
L54, P48, H80, HAss47, HAcc68

Hannes Wettstein, 1999

Upholstered seat, rear legs and back solid bentwood, stackable, optional row connector  
W54, D48, H80, SH47, ALH68

## Varianten / variantes / variants

miro  
6-400miro  
6-400amiro  
6-403miro  
11-560miro  
11-580

## Technische Angaben / specifications / specifications

## Masse / mesure / measure

54cm  
21.3 in80 cm  
31.5 in48 cm  
18.9 in47 cm  
18.1 in

Gewicht / poids / weight 5.4 kg 10.8 lb

Polsterung / rembourrage / upholstery ja / oui / yes

Reihenverbindung / accouplement / mating system ja / oui / yes

Stapelung / empilage / stacking 4 Stühle / chaises / chairs

**miro 6-403a**

## Holzarten / types de bois / types of wood

## Belag / revêtement / surface



|               |           |
|---------------|-----------|
| Hêtre naturel | BN 000 AM |
| Buche natur   | BN 000 AM |
| Beech natural | BN 000 AM |



|                      |           |
|----------------------|-----------|
| Noyer noir naturel   | NN 000 AM |
| Schwarznuss natur    | NN 000 AM |
| Black walnut natural | NN 000 AM |



|               |           |
|---------------|-----------|
| Chêne naturel | EN 000 AM |
| Eiche natur   | EN 000 AM |
| Oak natural   | EN 000 AM |



|               |           |
|---------------|-----------|
| Hêtre noir    | BB 203 SG |
| Buche schwarz | BB 203 SG |
| Beech black   | BB 203 SG |



|                  |           |
|------------------|-----------|
| Cerisier naturel | KN 000 AM |
| Kirsche natur    | KN 000 AM |
| Cherry natural   | KN 000 AM |



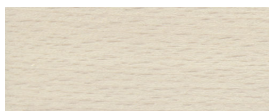
|                  |           |
|------------------|-----------|
| Hêtre anthracite | BB 200 SG |
| Buche anthrazit  | BB 200 SG |
| Beech anthracite | BB 200 SG |



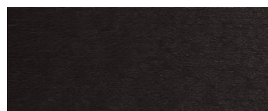
|               |           |
|---------------|-----------|
| Frêne naturel | FN 000 AM |
| Esche natur   | FN 000 AM |
| Ash natural   | FN 000 AM |



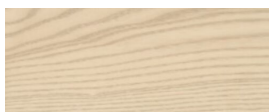
|                    |           |
|--------------------|-----------|
| Chêne chêne fumée  | EB 535 AM |
| Eiche Räuchereiche | EB 535 AM |
| Oak smoked oak     | EB 535 AM |



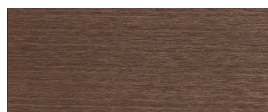
|                    |           |
|--------------------|-----------|
| Hêtre teinté blanc | BG 172 SG |
| Buche geweisst     | BG 172 SG |
| Beech whitewashed  | BG 172 SG |



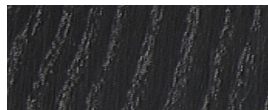
|                    |           |
|--------------------|-----------|
| Hêtre teinté ebony | BB 100 SG |
| Buche Ebony        | BB 100 SG |
| Beech ebony        | BB 100 SG |



|                        |           |
|------------------------|-----------|
| Frêne pigmenté blanc   | FW 001 OL |
| Esche weisspigmentiert | FW 001 OL |
| Ash white-pigmented    | FW 001 OL |



|                    |           |
|--------------------|-----------|
| Hêtre teinté noyer | BB 151 SG |
| Buche Nuss         | BB 151 SG |
| Beech walnut       | BB 151 SG |



|               |           |
|---------------|-----------|
| Frêne noir    | FB 203 AM |
| Esche schwarz | FB 203 AM |
| Ash black     | FB 203 AM |